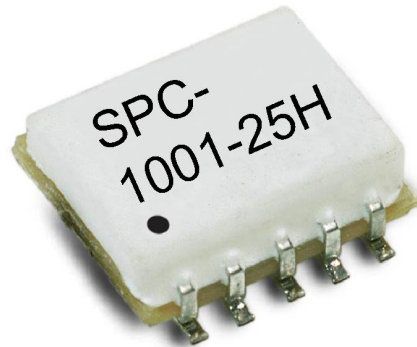


### Features

- Frequency Range 800 to 1000 MHz
- Low Cost and RoHS Compliant
- Small Industry Standard SMT package
- Available in Tape-and-Reel
- 50  $\Omega$  Characteristic Impedance

### Applications

- Wireless Broadband
- Communication Systems



### Product Description

The SPC-1001-25H is an in-phase two way power splitter is designed for applications that require small, low cost, and highly reliable surface mount components. Applications may be found in broadband, wireless and other communications systems. These units are built Lead-Free and RoHS compliant. S-Parameters are available on request.

### Specifications

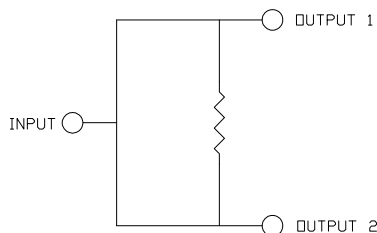
| Parameter               | Minimum | Typical* | Maximum |
|-------------------------|---------|----------|---------|
| Frequency Range (MHz)   | 800     |          | 1000    |
| Insertion Loss (dB)     |         | 0.5      | 1.0     |
| Isolation (dB)          | 12      | 15       |         |
| Return Loss (dB)        |         | 14       | 11      |
| Amplitude Balance (dB)  |         | 0.2      | 0.4     |
| Phase Balance (Degrees) |         | 1.0      | 3.0     |

\* Typical data represents mid-band performance @ 25 C.

### Absolute Maximum Ratings

| Parameter             | Maximum                  |
|-----------------------|--------------------------|
| RF Power              | +33 dBm                  |
| Operating Temperature | -55 to +100 $^{\circ}$ C |
| Storage Temperature   | -55 to +100 $^{\circ}$ C |

### Schematic

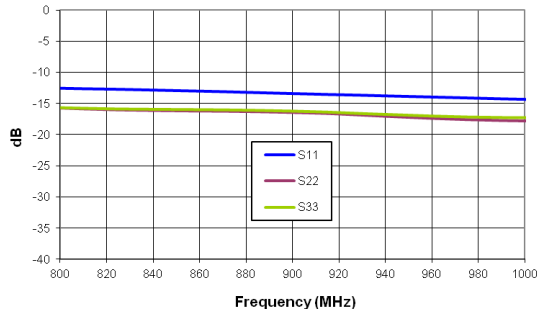




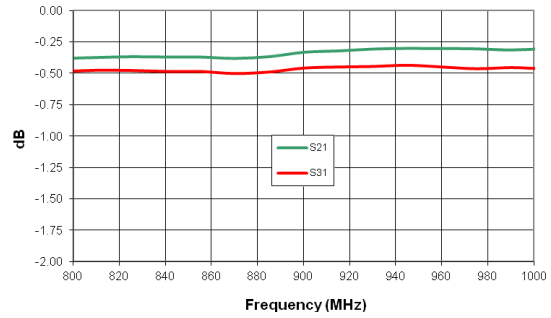
# SPC-1001-25H 2 WAY SURFACE MOUNT SPLITTER

## Typical Data

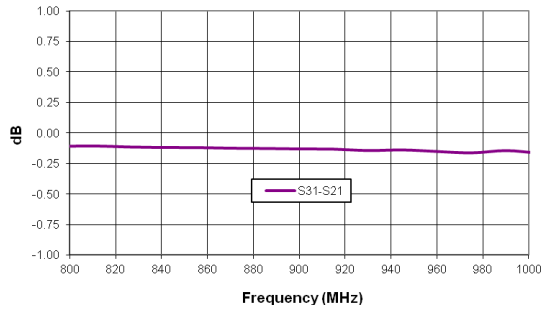
Return Loss



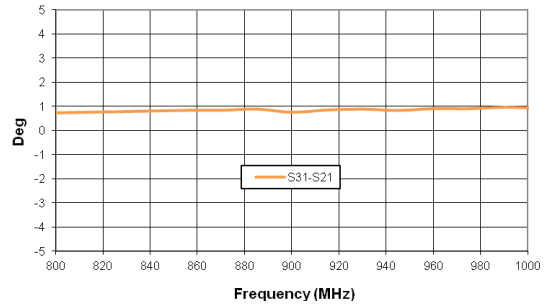
Insertion Loss



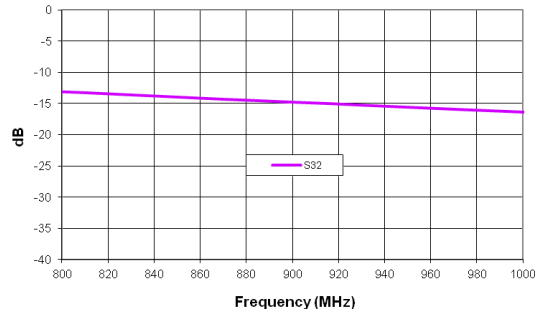
Amplitude Balance



Phase Balance



Isolation



MiniRF, Inc.

2010 Crow Canyon Place  
Suite 100  
San Ramon, CA 94583

Tel. 408 228-3533  
www.minirf.com

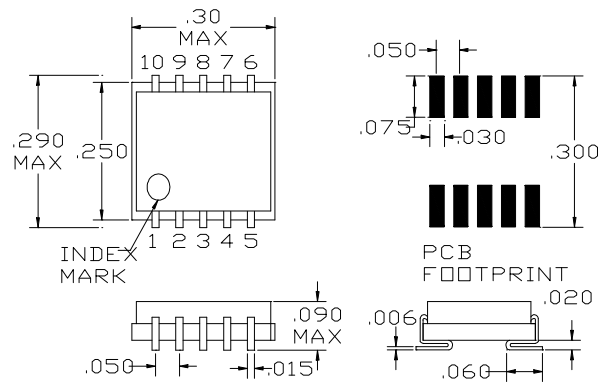


# SPC-1001-25H 2 WAY SURFACE MOUNT SPLITTER

## Pin Out

| Pin           | Function |
|---------------|----------|
| 3             | INPUT    |
| 10            | OUTPUT 1 |
| 6             | OUTPUT 2 |
| 1,2,4,5,7,8,9 | GROUND   |

## Package S10



MiniRF, Inc.

2010 Crow Canyon Place  
Suite 100  
San Ramon, CA 94583

Tel. 408 228-3533  
[www.minirf.com](http://www.minirf.com)