



MRFSP0014 2-WAY SPLITTER



S-19

Features

- Frequency Range 5 to 1002 MHz
- Low Cost and RoHS Compliant
- Small SMT package
- Available in Tape-and-Reel
- 75 Ω Characteristic Impedance

Applications

- Broadband/CATV
- Wireless



Product Description

The MRFSP0014 2-way Splitter is designed for applications that require small, low cost, and highly reliable surface mount components. Applications may be found in broadband, wireless and other communications systems. These units are built Lead-Free and RoHS compliant. S-Parameters are available on request.

Specifications

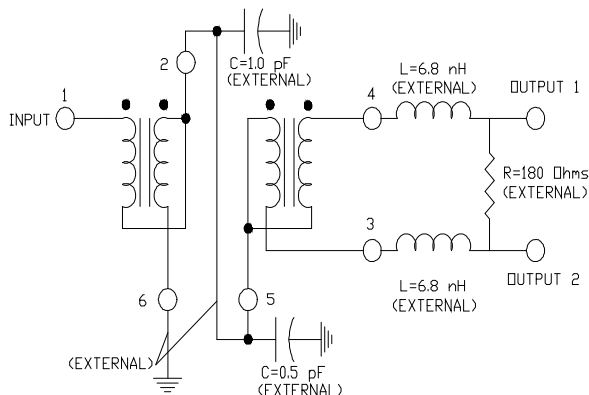
| Parameter | Minimum | Typical* | Maximum |
|-------------------------|---------|----------|---------|
| Frequency Range (MHz) | 5 | | 1002 |
| Insertion Loss (dB) | | 0.5 | 0.75 |
| Isolation (dB) | 25 | 30 | |
| Return Loss (dB) | 17 | 18 | |
| Amplitude Balance (dB) | | 0.2 | 0.3 |
| Phase Balance (Degrees) | | 1.0 | 4.0 |

* Typical data represents mid-band performance @ 25 C.

Absolute Maximum Ratings

| Parameter | Maximum |
|-----------------------|----------------|
| RF Power | +33 dBm |
| Operating Temperature | -55 to +100 °C |
| Storage Temperature | -55 to +100 °C |

Schematic



MiniRF Incorporated

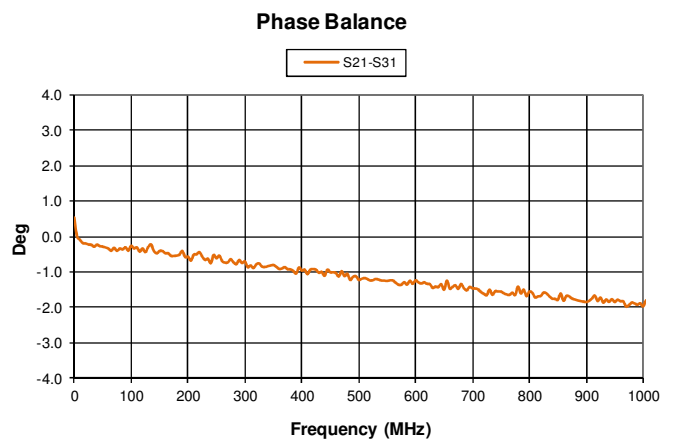
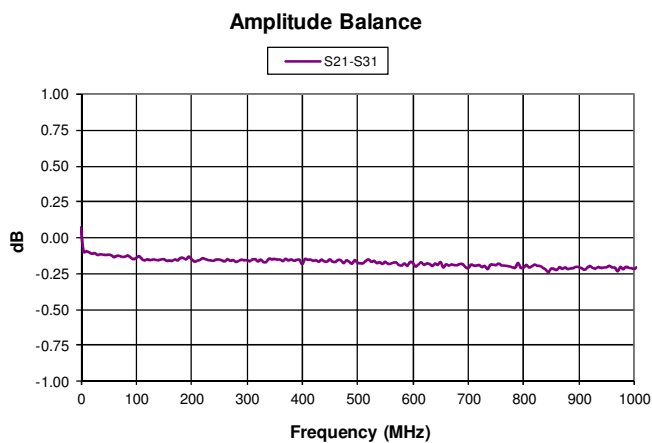
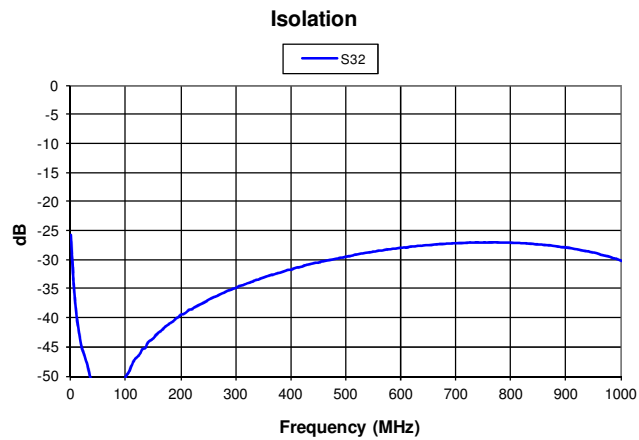
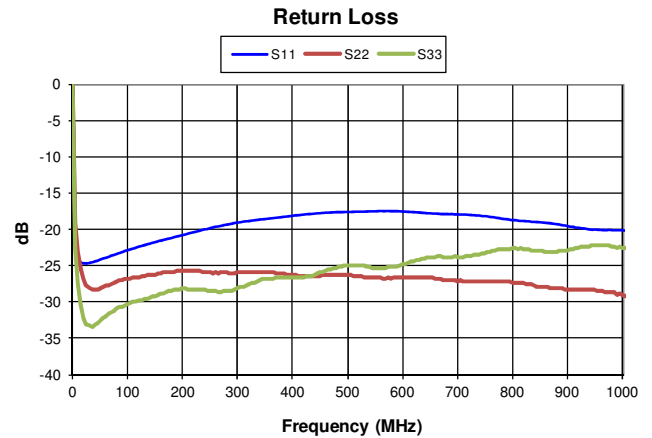
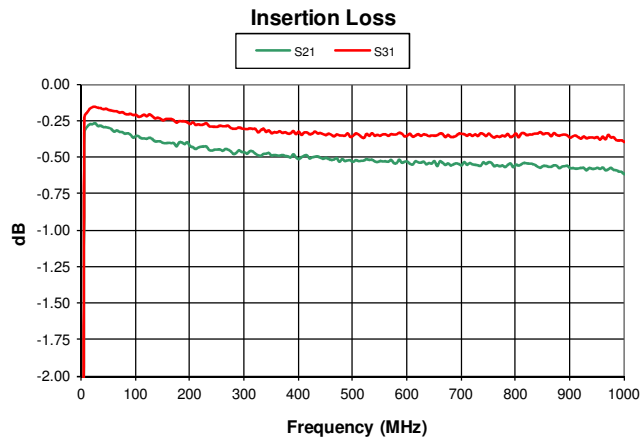
2010 Crow Canyon Place
Suite 100
San Ramon, CA 94583

Tel. 408 228-3533
www.minirf.com



MRFSP0014 2-WAY SPLITTER

Typical Data



MiniRF Incorporated

2010 Crow Canyon Place
Suite 100
San Ramon, CA 94583

Tel. 408 228-3533
www.minirf.com

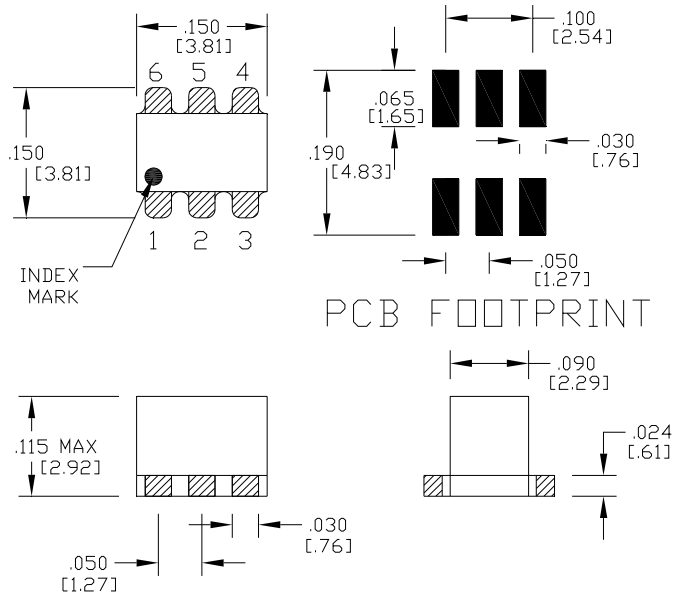


MRFSP0014 2-WAY SPLITTER

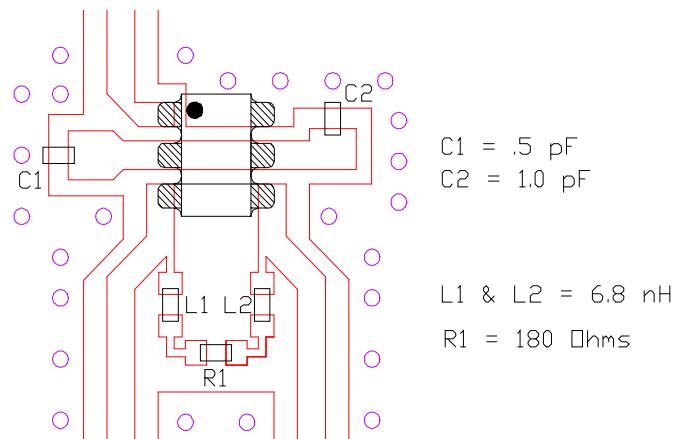
Pin Out

| Pin | Function |
|-----|--------------|
| 1 | INPUT |
| 2 | C2 |
| 3 | OUTPUT 1, R1 |
| 4 | OUTPUT 2, R1 |
| 5 | C1 |
| 6 | GROUND |

Package S19



Test Footprint



MiniRF Incorporated